



~ Week 9 ~



12 Weeks of
Christmas

www.StampwithJenn.com





Traditions of Christmas Gift Box

Supplies

Stamps	Ink	Paper
Traditional Labels (165864)	VersaMark (102283)	Traditions of Christmas Specialty Designer Series Paper (165853)
		Gold Foil Sheet (132622)
		Real Red (102482)
Tools	Accessories	Adhesives
Stampin' Cut & Emboss Machine (149653)	Traditional Sparkling Sequins (165875)	Multipurpose Liquid Glue (110755)
Paper Trimmer (152392)		Stampin' Seal (152813)
Bone Folder (102300)		Tear & Tape (154031)
Take your Pick Tool (144107)		Stampin' Dimensionals (104430)
Traditional Labels Dies (165864)		
Christmas Greenery Dies (165872)		
Stylish Shapes Dies (159183)		
Heat Tool (129053)		
Metallics Wow! Embossing Powder (165678)		
Corner Rounder (non-Stampin' Up!)		
Scissors (non-Stampin' Up!)		

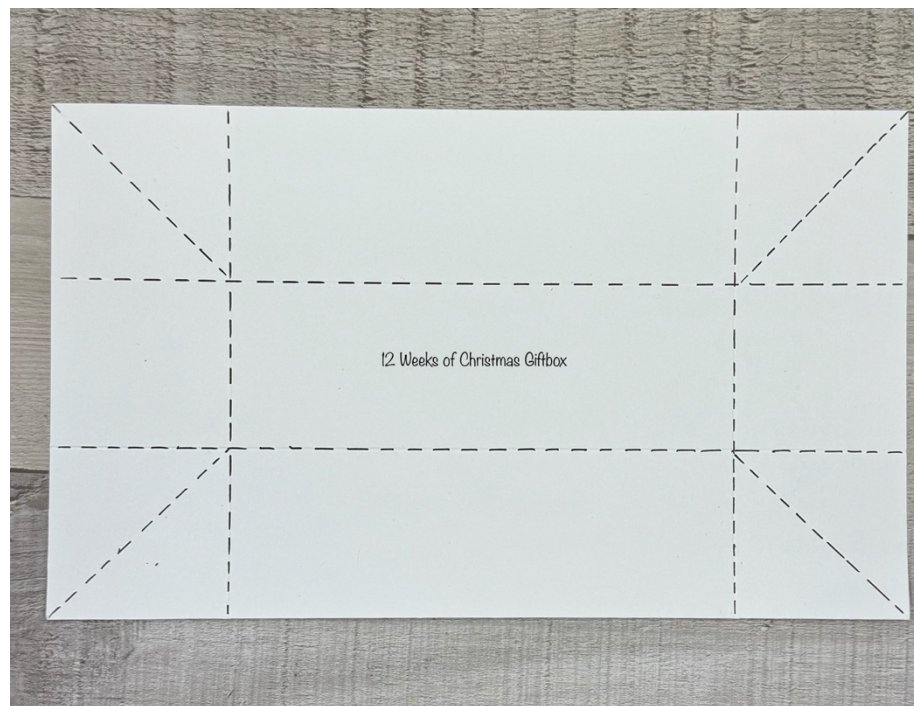
**Get the Traditional Labels Bundle (165865) stamp set and dies and save 10%*

Measurements

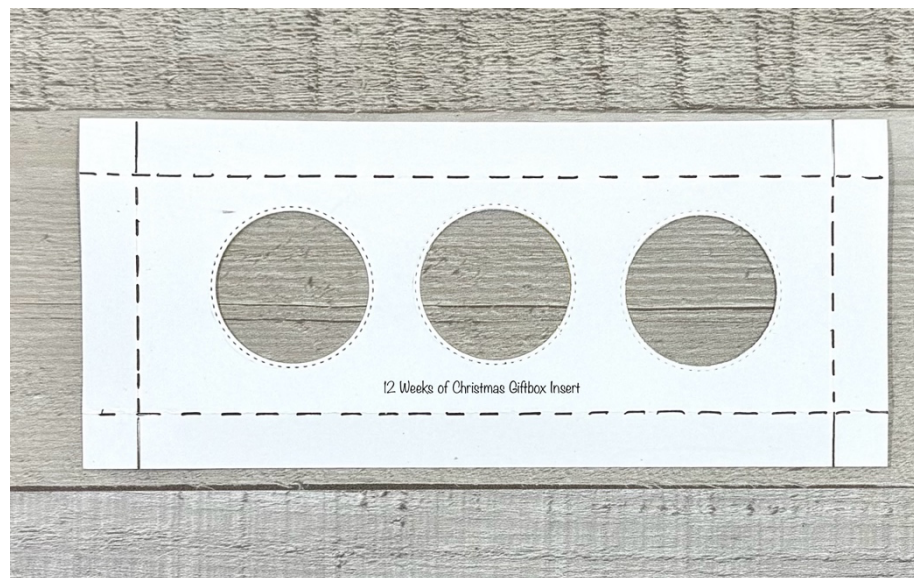
Item	Part of Project	Measurements
Real Red	outer box	8 $\frac{3}{4}$ " x 6"; scored at 2", 4", 6", 8"
Real Red	insert	6 $\frac{3}{4}$ " x 2 $\frac{7}{8}$ "
Real Red	largest oval tag die	2 $\frac{3}{4}$ " x 1 $\frac{3}{4}$ "
Real Red	belly band	8 $\frac{1}{2}$ " x 4"
Gold Foil	largest tag tie	3 $\frac{1}{2}$ " x 2 $\frac{1}{2}$ "
Traditional Christmas DSP	inside	9 $\frac{7}{8}$ " x 5 $\frac{7}{8}$ "
Traditional Christmas DSP	belly band image	die cut

Instructions

1. Place the piece of 8 $\frac{3}{4}$ " x 6" Real Red cardstock on the Paper Trimmer and on the 8 $\frac{3}{4}$ " side, score the cardstock at 2", 4", 6" and 8".
2. Use the Bone Folder and rub all of the score lines, folding them into a Mountain fold (with the score line folded UP like a mountain).
3. Use a Corner Rounder Punch and round the corners on the $\frac{3}{4}$ " flap.
4. Place the 9 $\frac{7}{8}$ " x 5 $\frac{7}{8}$ " piece of Traditional Christmas Designer Series Paper on the non-featured side, score on the 9 $\frac{7}{8}$ " side at 2" and 7 $\frac{7}{8}$ ". Turn and score on the 5 $\frac{7}{8}$ " side at 2" and 3 $\frac{15}{16}$ ". Fold the folds into mountain folds.
5. Take the 9 $\frac{7}{8}$ " x 5 $\frac{7}{8}$ " piece of Traditional Christmas Designer Series Paper, then score from outside corners to the inside where the corner score lines meet as shown in the diagram below.



6. Use the Bone Folder and rub all of the score lines, so that the corners fold in to form the box. Secure with adhesives in place.
7. Attach the Designer Series Paper to the Real Red outer box. It should fit as long as you scored and folded the DSP into mountain folds.
8. Take the $6 \frac{3}{4}$ " x $2 \frac{7}{8}$ " piece of Real Red cardstock and score it at $\frac{1}{2}$ " on all four sides. Cut into the corners as shown by the solid lines in the diagram below.
9. On the Stampin' Cut & Emboss Machine, cut out three circles into the Real Red insert using the second smallest circle from the Stylish Shapes (see diagram below).



10. Use the Bone Folder to rub all the score lines, then fold the sides down to insert into the box. There is no need to use adhesives, as it is a snug fit.
11. Create the belly band for the box from the 8 ½" x 4" piece of Real Red cardstock. First, score the cardstock on the 8 ½" side at 2", then wrap it around the box. Use your fingers to fold the other three sides down and around the box.
12. Secure the ends of the belly band with Multipurpose Liquid Glue
13. On the Stampin' Cut & Emboss Machine, cut out the largest floral spray from the scrap piece of DSP using the Christmas Greenery Dies.
14. On the Stampin' Cut & Emboss Machine, cut out a gold tag from the 3 ½" x 2 ½" piece of Gold Foil Sheet Foil with the largest Tag Die from the Traditional Labels Dies.
15. Attach the cut-out flower spray onto the Gold Tag with Stampin' Dimensionals.
16. Attach the gold tag to the belly band with Stampin' Dimensionals.
17. Attach three gold Sparkling Sequins in the middle of the flower spray.

18. On the Stampin' Cut & Emboss Machine, cut out an oval from the 2 ¾" x 1 ¾" piece of Real Red cardstock using the Traditional Labels dies.
19. Stamp "Just For You" with VersaMark ink towards the bottom of die-cut Real Red Oval. Sprinkle gold embossing powder over the greeting and shake off any excess. Heat set with the Heat Tool.
20. Slip the embossed Real Red tag just in under the Designer Series Paper floral spray attach it.
21. Fill the box with three round chocolates like Ferro Rocher or Lindt chocolates.

All images ©1990-2025 Stampin' Up! ®This tutorial is private and may not be sold or distributed. Please do not share these tutorials with others. Thank you!



Contact Info

Jenn Tinline | www.StampwithJenn.com | fun@stampwithJenn.com | 905-802-9902