



~ Week 7 ~



12 Weeks of
Christmas

www.StampwithJenn.com





Box of Chocolate (Oreos or Ghirardelli Squares)

Supplies		
Stamps	Ink	Paper
Keeping Traditions (166806)	Shaded Spruce (147088)	Traditions of Christmas Specialty Designer Series Paper (165853)
	Real Red (147084)	Elegant Pine Snowflakes 12" x 12" Designer Series Paper (166066)
	Cherry Cobbler (147083)	Window Sheets (142314)
	Secret Sea (165285)	Real Red (102482)
Tools	Accessories	Adhesives
Stampin' Cut & Emboss Machine (149653)	Shaded Spruce & Gold Edged Ribbon (166078)	Multipurpose Liquid Glue (110755)
Paper Trimmer (152392)		Stampin' Seal (152813)
Bone Folder (102300)		Tear & Tape (154031)
Take your Pick Tool (144107)		Stampin' Dimensionals (104430)

**Get the Peace on Earth Bundle (165925) stamp set and dies and save 10%*

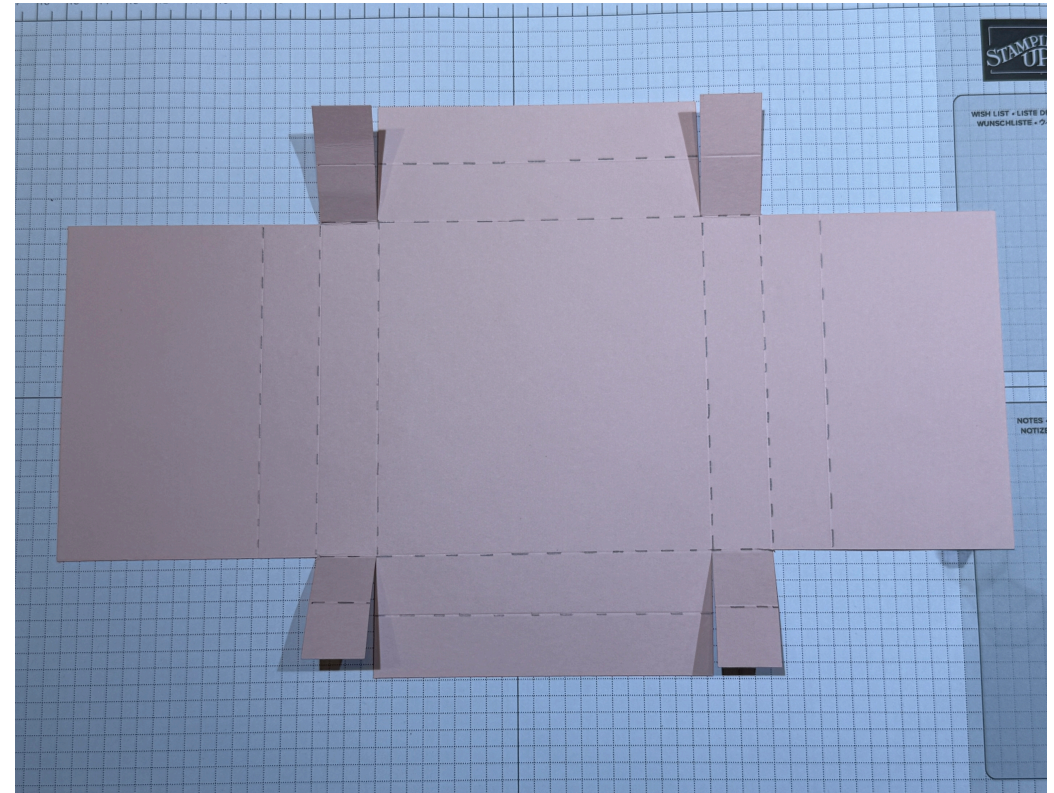
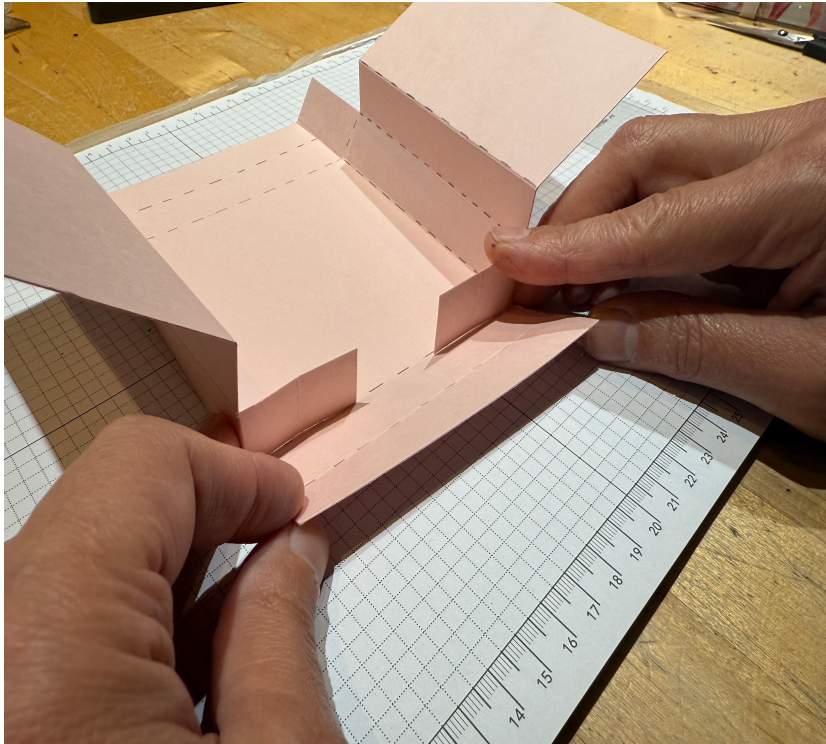
Measurements

Item	Part of Project	Measurements
Designer Series Paper	Traditions of Christmas for Oreo Box	12" x 7 ¼"
Designer Series Paper	Elegant Pines Snowflakes or Ghirardelli Box	12" x 7 ¼"
Window Sheets	box top	12" x 4 ¼"
Basic White	tag & Holly	scrap
Real Red	tag accent	scrap
Ribbon		18"

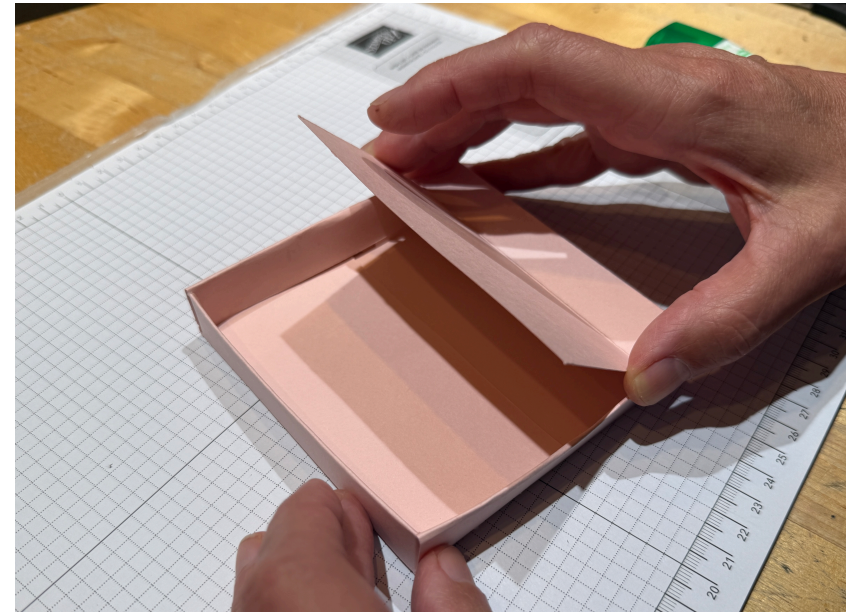
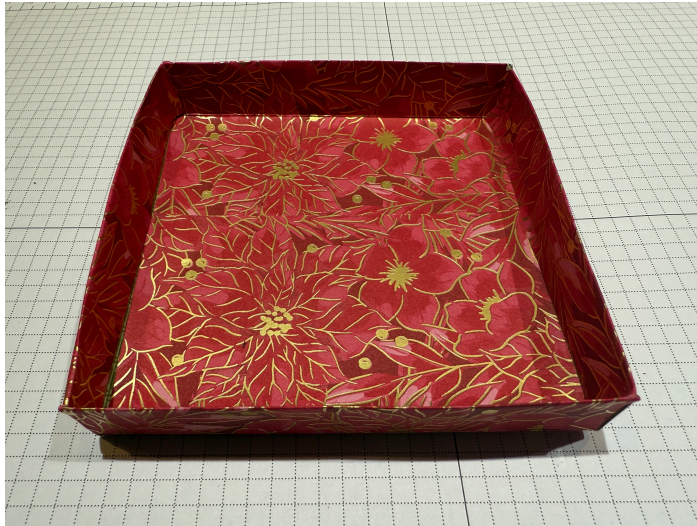
Instructions

1. Score the 12" x 7 ¼" sheet of Designer Series Paper as follows (see pic below):
 - a. Portrait direction: ¾", 1 ½", 5 ¾", & 6 ½"
 - b. Landscape direction: 2 ¼", 3", 3 ¾", 8", 8 ¾", & 9 ½"
2. Use scissors to cut off the four corners (as shown in photo).

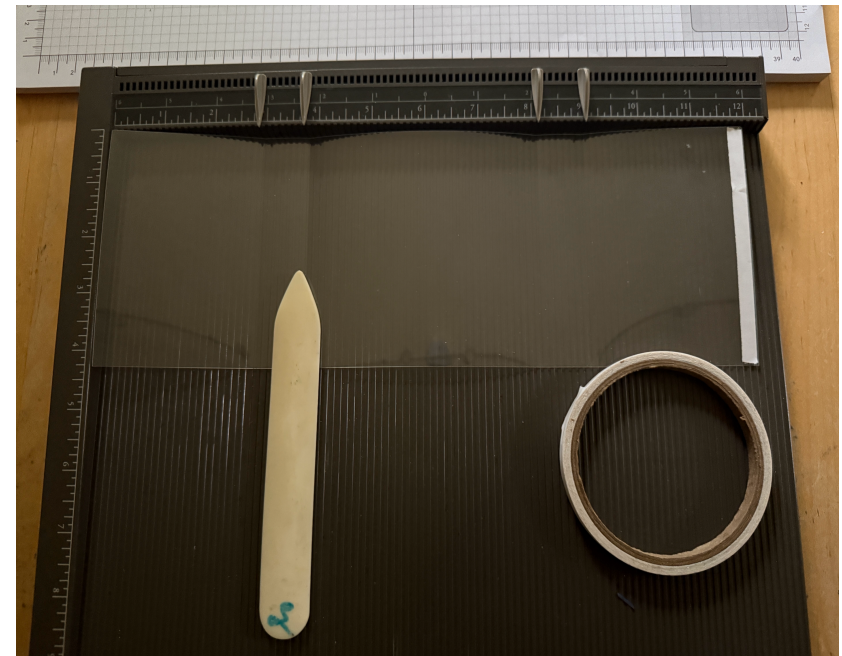
3. Use scissors to cut slits up the middle tab to the score line.
4. Use the Bone Folder to go over all of the scored lines.
5. Fold in the two tabs. Add glue and adhere the sides.
6. Glue two sides around the tabs to create a box base.



7. Fold in and adhere two other larger sides, burnish all sides to create a short, sided box base



8. Score the 12" x 4 1/4" Window Sheet at 2 7/8", 3 3/4", 8 1/8" and 9". A Score Board will let you score a deeper mark than a Paper Trimmer, but if you don't have a Score Board, then try to score/press heavily to make a mark.
9. Place Tear & Tape along one of the short edges (before folding).
10. Burnish along the scored lines with the Bone Folder.
11. Place chocolates inside the box and wrap the Window Sheet around the box (with edges on bottom). Seal it closed.



12. For the tag, stamp the Holly with Shaded Spruce ink and the berries with Real Red ink onto a scrap of Basic White cardstock.
13. Cut out the holly image with scissors.
14. Stamp the greeting with either Secret Sea ink (for the Holly Jolly) or Cherry Cobbler ink (for the Make Merry) on a scrap piece of Basic White cardstock.
15. On the Stampin' Cut & Emboss Machine, cut out the greeting with a matching die from the Stylish Shapes dies. If desired, cut out an accent shape from the Real Red cardstock.
16. Attach the cut-out holly to the top of the greeting.
17. Tie a bow around the box.
18. Attach the greeting, up close to the ribbon, and to the box with a Stampin' Dimensional.



All images ©1990-2025 Stampin' Up! ®This tutorial is private and may not be sold or distributed. Please do not share these tutorials with others. Thank you!

Contact Info

Jenn Tinline | www.StampwithJenn.com | fun@stampwithJenn.com | 905-802-9902